

## Component Replacement - electrical –



*Xperia™ XZ Premium*  
*G8141, G8142 (Dual SIM)*

## CONTENTS

1	Replaceable Components .....	3
2	Tools .....	5
3	Component Placing.....	7
4	Additional Repair Info .....	9
5	Revision History .....	15

***For general information about electrical repair related issues, refer to 1220-1336: Generic Repair Manual - electrical -.***

***Baking prior to repair is required, if the board have been exposed to air more than 12 hours from PWB package opening. Too long exposure time increase the level of moisture in PWB and the PWB could delaminate during repair process and result in direct or latent failures and reduce reliability.***

***The boards shall be baked in 125°C ±5°C for 4 hours.***

***All Electrical components are RLC (Reversed Logistic Classification) level C, refer to the 3.4 Valid Spare Parts chapter in the Warranty Claim Instruction RE4249 about disposition of the parts.***

***Test after component replacement to refer to the 1309-7849 G8142/G8142 Test Instructions - mechanical -.***

***Do not remove shield can lids (RF performance will be damaged).***

***If there are components located on right next to the component that intend to replace, protect those components with Kapton tape to avoid damages.***

## 1 Replaceable Components

### EXPLANATION OF ABBREVIATIONS USED IN THE COLUMN 'COMMENTS' BELOW

#### REPAIR METHOD

**HA** = Hot Air (removal & mounting)

**ST** = Soldering Tool (removal & mounting)

**HA/ST** = Hot Air for removal - Soldering Tool for mounting

**BGA** = BGA Station

**BH** = Bottom Heater

#### ADDITIONAL INFORMATION

⇒1 (2, 3, 4, etc.) = Proceed to 'Additional Repair Info' for further instructions in the indicated section(s).

### Primary Side

Position	Component	Part no.	Comments
CN4000	Card Conn SIM 2 in 1	1304-3910	HA+BH or BGA → 1
CN4001	Card Conn SIM	1305-0317	HA+BH or BGA → 2
CN4431	Conn Leaf Spring Plug 1p WH : 0.8+-0.2	1294-8905	HA+BH → 3
CN4432	Conn Leaf Spring Plug 1p WH : 0.8+-0.2	1294-8905	HA+BH → 3
CN4451	Conn Leaf Spring Plug 1p WH : 0.8+-0.2	1294-8905	HA+BH → 4
CN4452	Conn Leaf Spring Plug 1p WH : 0.8+-0.2	1294-8905	HA+BH → 4
CN4453	Conn Leaf Spring Plug 1p WH : 0.8+-0.2	1294-8905	HA+BH → 4
CN4454	Conn Leaf Spring Plug 1p WH : 0.8+-0.2	1294-8905	HA+BH → 4
CN4455	Conn Leaf Spring Plug 1p WH : 0.8+-0.2	1294-8905	HA+BH → 4
CN4641	Conn Leaf Spring Plug 1p WH : 0.8+-0.2	1294-8905	HA+BH → 5
CN4642	Conn Leaf Spring Plug 1p WH : 0.8+-0.2	1294-8905	HA+BH → 5
CN4861	Conn Leaf Spring Plug 1p WH : 0.8+-0.2	1294-8905	HA+BH → 5
CN4862	Conn Leaf Spring Plug 1p WH : 0.8+-0.2	1294-8905	HA+BH → 5
CN4863	Conn Leaf Spring Plug 1p	1295-7176	HA+BH → 4
CN4864	Conn Leaf Spring Plug 1p	1295-7176	HA+BH → 4
CN4865	Conn Leaf Spring 1p	1306-4808	HA+BH → 6
CN4866	Conn Leaf Spring 1p	1306-4808	HA+BH → 7
CN4867	Conn Leaf Spring 1p	1306-4808	HA+BH → 6
CN4868	Conn Leaf Spring 1p	1306-4808	HA+BH → 3
CN4869	Conn Leaf Spring 1p	1306-4808	HA+BH → 4
CN4870	Conn Leaf Spring 1p	1306-4808	HA+BH → 4
CN8000	Conn Leaf Spring Plug 1p WH : 0.8+-0.2	1294-8905	HA+BH → 6
CN8001	Conn Leaf Spring Plug 1p WH : 0.8+-0.2	1294-8905	HA+BH → 6
D7601	LED 2.7x1.35x0.5mm	1292-0821	HA+BH → 8

## Replaceable Components

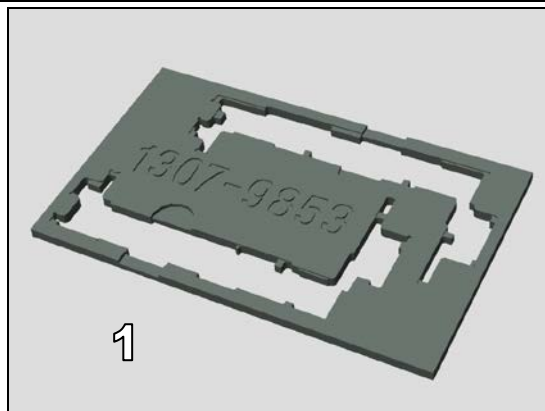
### Secondary Side

Position	Component	Part no.	Comments
CN1300	Conn BtB Plug 4p HIROSE/BM22	1281-9973	HA+BH → 1
CN2201	Conn BtB Receptacle 20p I-PEX	1306-0093	HA+BH → 2
CN4402	Conn Coax Receptacle 1p	1299-1838	HA+BH → 3
CN4651	Conn Leaf Spring Plug 1p WH : 0.8+-0.2	1294-8905	HA+BH → 4
CN4652	Conn Leaf Spring Plug 1p WH : 0.8+-0.2	1294-8905	HA+BH → 4
CN4653	Conn Leaf Spring Plug 1p WH : 0.8+-0.2	1294-8905	HA+BH → 4
CN4654	Conn Leaf Spring Plug 1p WH : 0.8+-0.2	1294-8905	HA+BH → 4
CN5103	Conn BtB Receptacle 10p SMK PB4H	1241-9329	HA+BH → 5
CN7101	Conn BtB Receptacle 54p IPEX	1305-1884	HA+BH → 6
CN7300	Conn BtB Receptacle 34p DDK BB35	1293-6188	HA+BH → 7
CN7301	Conn BtB Receptacle 34p DDK BB35	1293-6188	HA+BH → 8
CN8650	Conn BtB Receptacle 10p SMK PB4H	1241-9329	HA+BH → 9
CN9500	Conn BtB Receptacle 34p DDK BB35	1293-6188	HA+BH → 10
CN9503	Conn BtB Receptacle 10p SMK PB4H	1241-9329	HA+BH → 11
D7800	LED White	1304-1661	HA+BH → 12
MC3001	Mic 4.0 Silicon F51	1302-9873	HA+BH → 13
MC3002	Mic 3.5 Silicon F51	1297-9686	HA+BH → 14

## 2 Tools

### SPECIAL TOOL

1. PBA Soldering Fixture (1307-9853)



### STANDARD TOOLS

1. Small Convection (Hot Air) Device



2. Soldering Iron



3. Soldering wick



## Tools

4. Solder-wire



5. Solder-paste



6. Low Static Heat Protection Tape



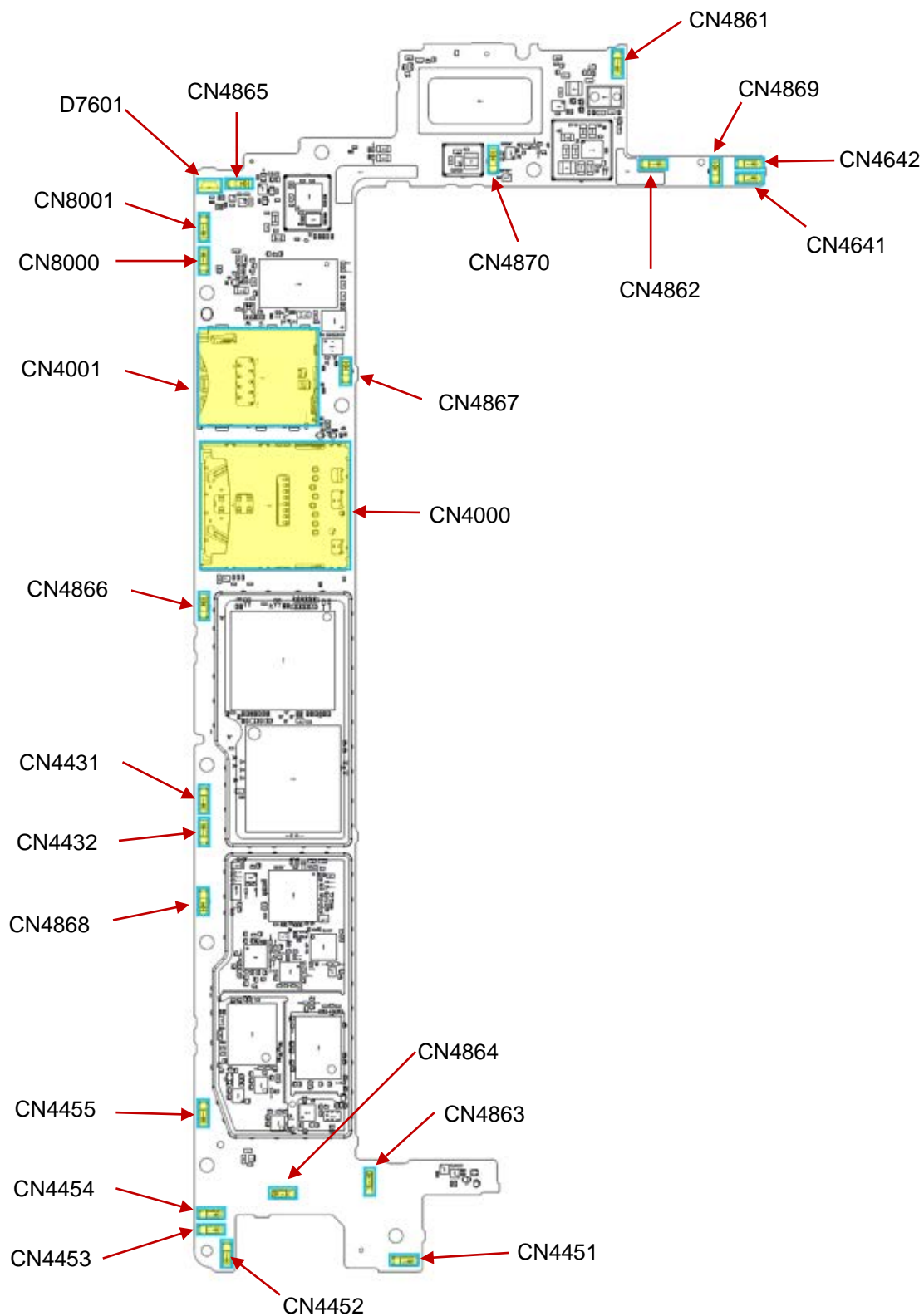
7. Flux



**Refer to the 1003-9107 Tools Catalogue for detail of standard tools.**

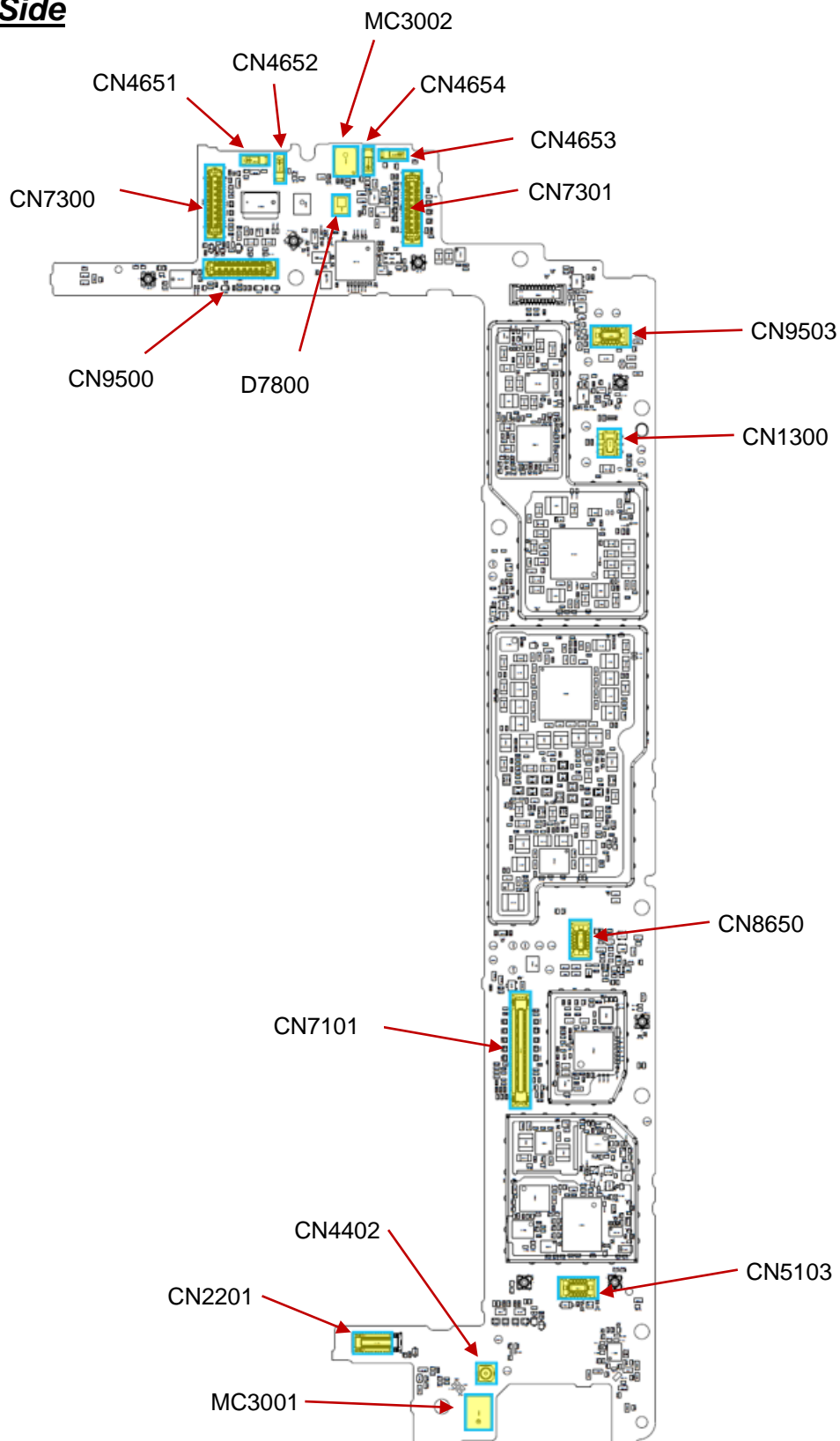
## 3 Component Placing

### Primary Side



## Component Placing

### Secondary Side



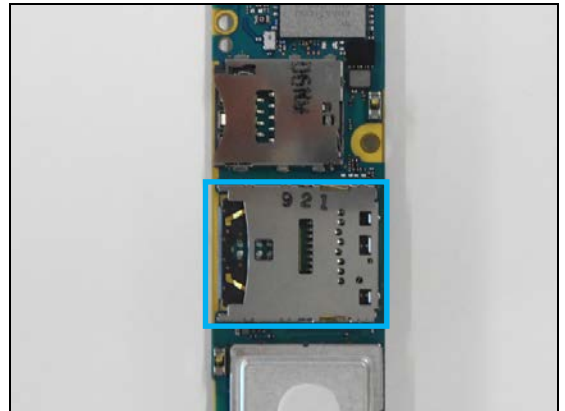
## 4 Additional Repair Info

### Primary Side 1

CN4000

**Replace if mechanical damaged (No SD Card is detected),**

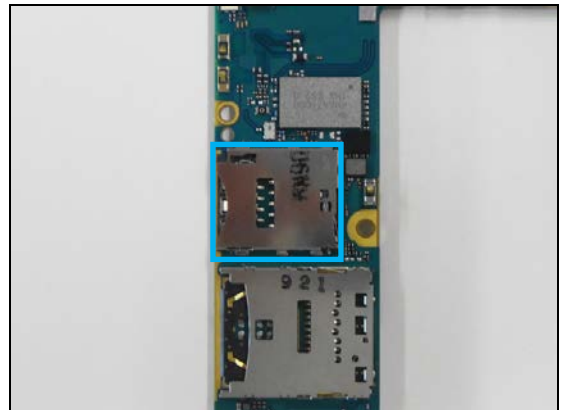
**(only for G8142: No network second SIM, restart, No second SIM card is detected ).**



### Primary Side 2

CN4001

**Replace if mechanical damaged (No network, restart, No SIM card is detected).**



### Primary Side 3

CN4431, CN4432, CN4868

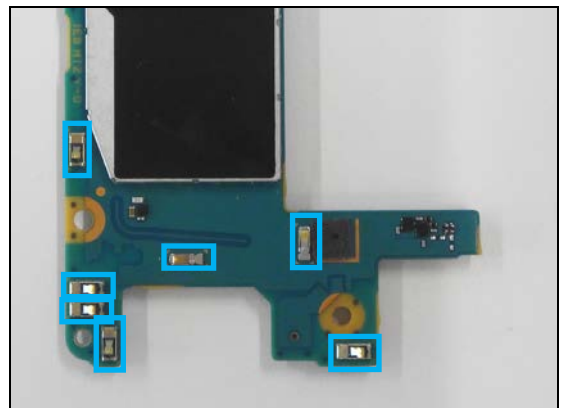
**Replace if mechanical damaged (No or bad network).**



### Primary Side 4

CN4451, CN4452, CN4453, CN4454, CN4455,  
CN4863, CN4864

**Replace if mechanical damaged (No or bad network).**

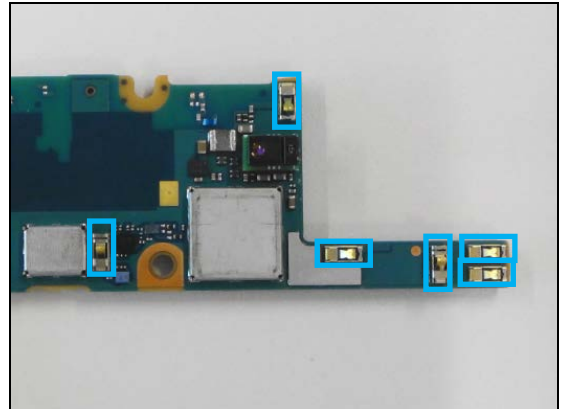


## Additional Repair Info

### Primary Side 5

CN4641, CN4642, CN4861, CN4862, CN4869, CN4870

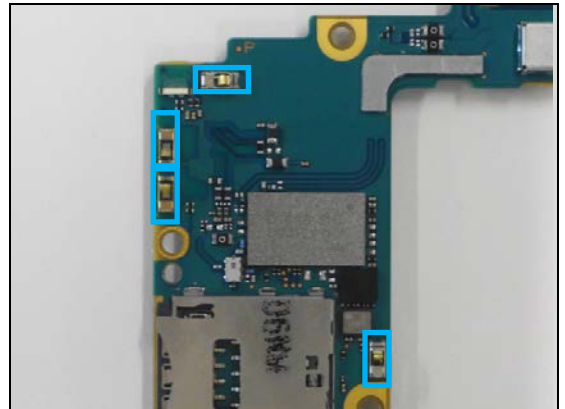
**Replace if mechanical damaged.**



### Primary Side 6

CN4865, CN4867, CN8000, CN8001

**Replace if mechanical damaged.**



### Primary Side 7

CN4866

**Replace if mechanical damaged.**

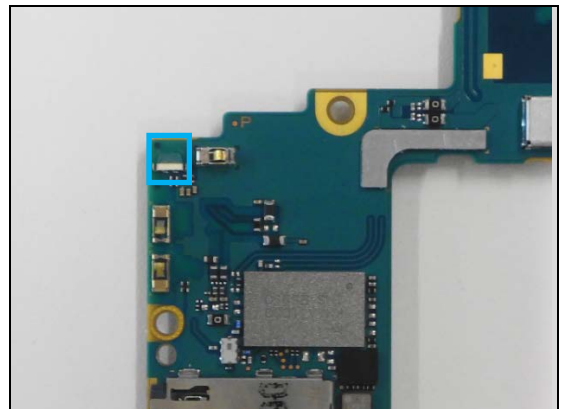
**Protect the SD Card connector with capton tape!**



### Primary Side 8

D7601

**Replace if no light of the LED (no indication of 3 colors LED).**

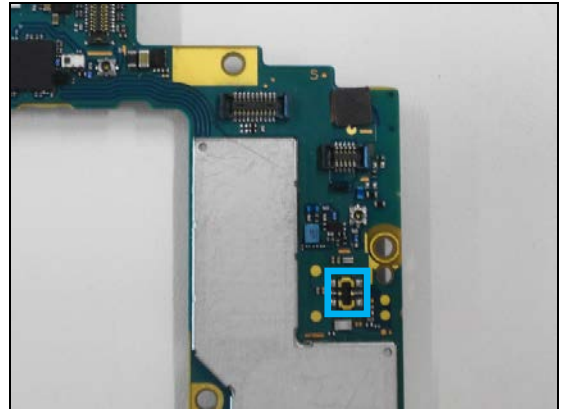


## Additional Repair Info

### Secondary Side 1

CN1300

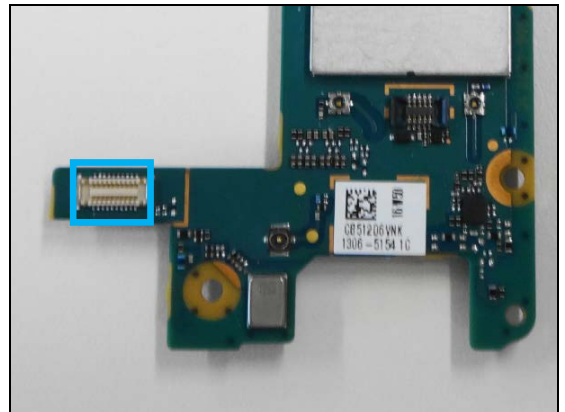
**Replace if mechanical damaged (No Power, No Charge Battery).**



### Secondary Side 2

CN2201

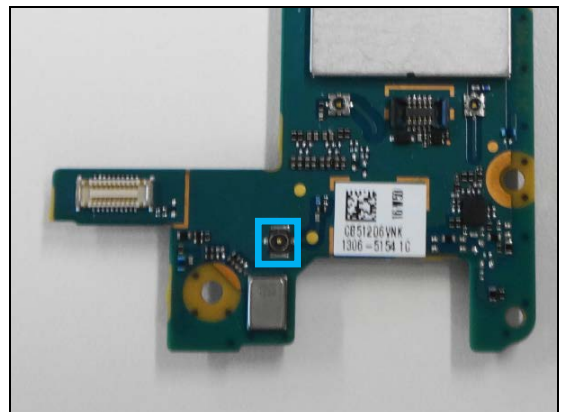
**Replace if mechanical damaged (No Charge the Battery, No Data Transfer).**



### Secondary Side 3

CN4402

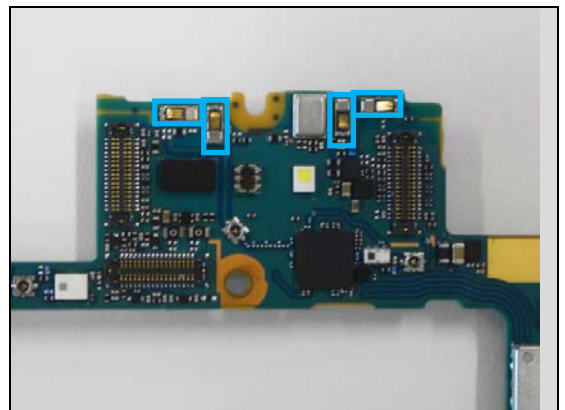
**Replace if mechanical damaged (No or bad network).**



### Secondary Side 4

CN4651, CN4652, CN4653, CN4654

**Replace if mechanical damaged (No or bad network).**

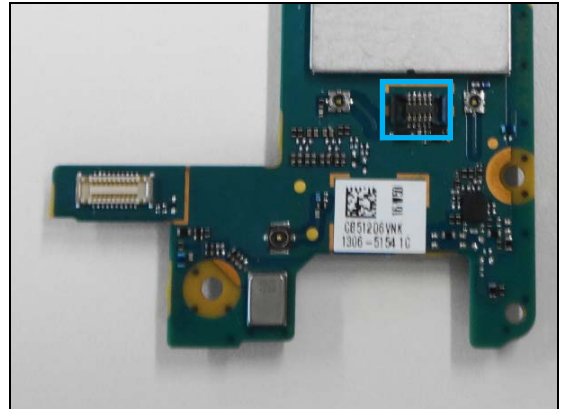


## Additional Repair Info

### Secondary Side 5

CN5103

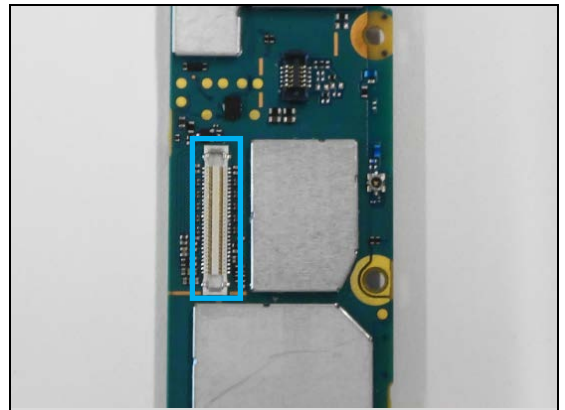
**Replace if mechanical damaged (No Vibration).**



### Secondary Side 6

CN7101

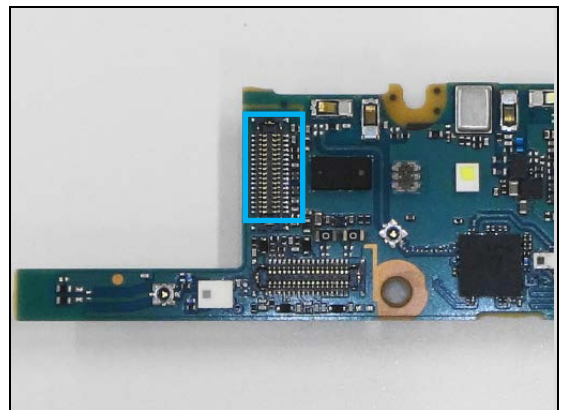
**Replace if mechanical damaged (No display, No Touch function, any display malfunction).**



### Secondary Side 7

CN7300

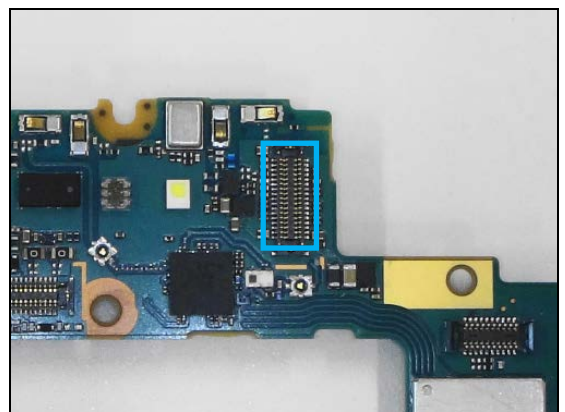
**Replace if mechanical damaged (Main Camera malfunctions).**



### Secondary Side 8

CN7301

**Replace if mechanical damaged (Front Camera malfunctions).**

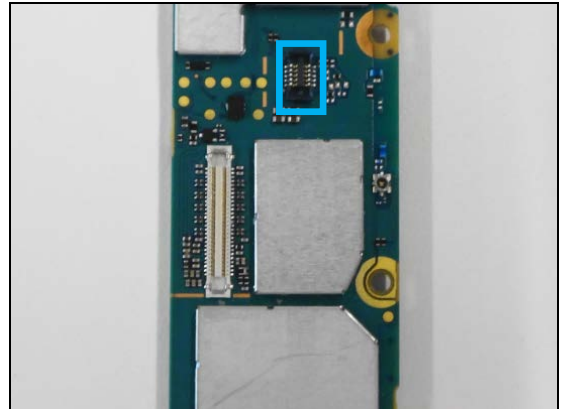


## Additional Repair Info

### Secondary Side 9

CN8650

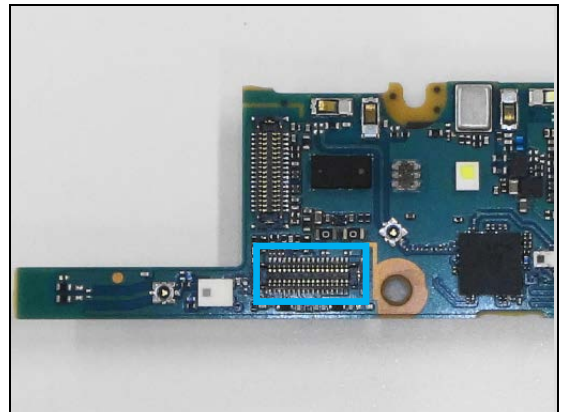
*Replace if mechanical damaged (NFC malfunction).*



### Secondary Side 10

CN9500

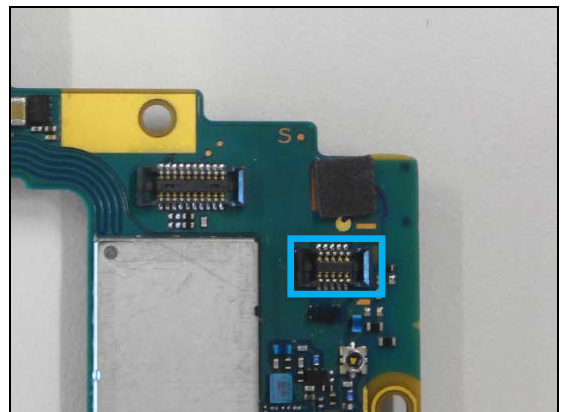
*Replace if mechanical damaged (Camera Key/Volume Key malfunction, no/bad sound of bottom speaker).*



### Secondary Side 11

CN9503

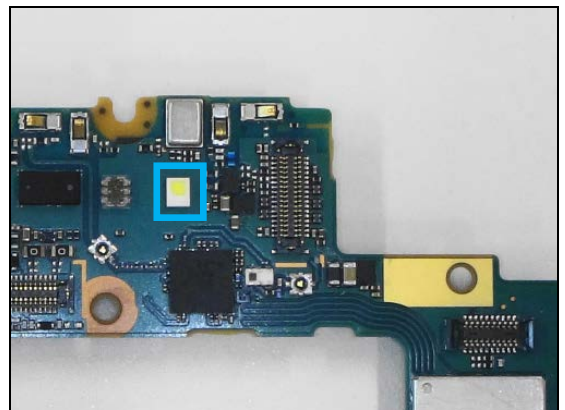
*Replace if mechanical damaged (no sound from Audio Jack).*



### Secondary Side 12

D7800

*Replace if Flash LED doesn't work.*

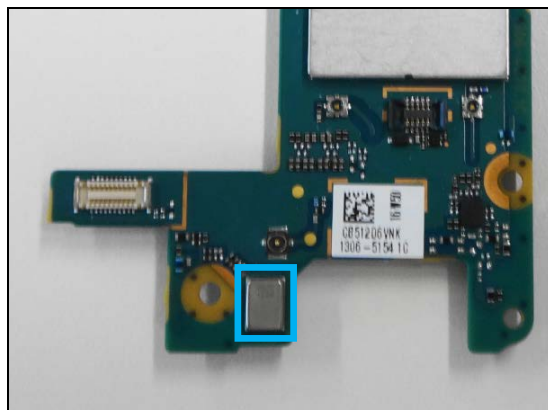


## Additional Repair Info

### Secondary Side 13

MC3001

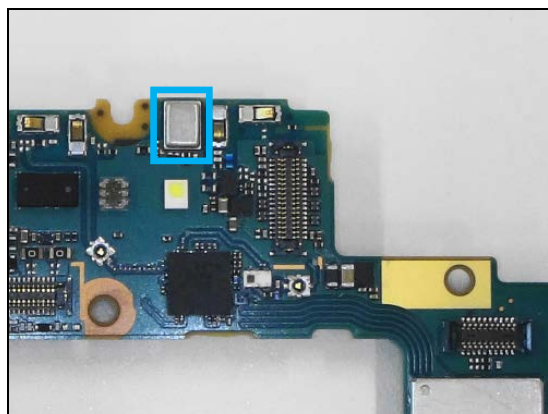
**Text! Replace if mechanical damaged (1<sup>st</sup> Mic defect).**



### Secondary Side 14

MC3002

**Text! Replace if mechanical damaged (2<sup>nd</sup> Mic defect).**



## 5 Revision History

Rev.	Date	Changes/Comments
1	2017-May-12	Initial release
2	2017-Jun-05	Correction Page 3, 9